



Brazil 2023
Youth
Sailing World
Championships



Sailing Instructions (SI)

8–16 December 2023
Búzios, Brazil

Issued by World Sailing on 4 December 2023
Changes made on 10 December 2023 at 19:00

Change log:

Amendment 1, 10 December 2023:
3.4, 5.3, 10.1, 10.5, 13, 14.1, 15.1, 17.2, 17.6, 17.7, 21.1,
Addendum 1
Addendum 5 – item 5, Addendum 6 - item 3
Addendum 7 - Equipment Inspection – Formula Kite

The 52st edition of the Youth Sailing World Championships will be held at Búzios, Brazil, from 8-16 December 2023.
The Organizing Authority (OA) is World Sailing in conjunction with Confederação Brasileira de Vela.

Official Suppliers

2023 Youth Sailing World Championships



Institutional Partners



Venue Partners



1 RULES

- 1.1 The regatta will be governed by the rules as stated in NOR 1.
- 1.2 RRS Appendix B, Windsurfing Fleet Racing Rules will apply. However, RRS B5 61.1(a) and B8 A8 are deleted.
- 1.3 RRS Appendix F, Kiteboarding Racing Rules will apply.
- 1.4 In all rules governing this regatta:
 - 1.4.1 **[SP]** denotes a rule for which a standard penalty may be applied by the Race Committee or Technical Committee without a hearing or a discretionary penalty applied by the International Jury with a hearing (see SI 15.4).
 - 1.4.2 **[NP]** denotes a rule that shall not be grounds for protests by a boat and for which the International Jury may refuse to hold a hearing. This changes RRS 60.1(a).
- 1.5 Only for Windsurfing events, add to RRS B3 27.4 as follows:

“The Race Committee may signal that competitors shall sail on a specific tack during the 10 seconds before and 10 seconds after the starting signal is made, by displaying a green flag for starboard tack or a red flag for port tack, before or with the warning signal.”
- 1.6 Only for Windsurfing events. Add to RRS B3 29.3 as follows: “When, at the warning signal, the course to the first mark is approximately ninety degrees from the true wind then,
 - (a) When at the starting signal the Race Committee identifies a board on the course side of the starting line, the race committee shall signal a general recall.
 - (b) If the Race Committee acts under SI 1.6(a) and the board is identified, she shall be disqualified without a hearing, even if the race is abandoned. The Race Committee shall hail or display her national letters, and she shall leave the course area immediately. If the race is restarted or resailed, she shall not sail in it. This changes RRS 36.

2 CHANGES TO SAILING INSTRUCTIONS

- 2.1 Any change to the Sailing Instructions will be posted before 0900 on the day it will take effect, except that any change to the schedule of races will be posted by 2000 on the day before it will take effect.
- 2.2 When any Sailing Instruction Addendum is changed, an updated version of it will be posted on the Official Notice Board as part of the Sailing Instructions.

3 COMMUNICATIONS WITH COMPETITORS

- 3.1 The Official Notice Board is located at <https://worldsailingywc.org/notice-board/>.

In case of technical issues, paper forms will be available at the Jury Office (hearing requests) and at the Race Office (all other forms).
- 3.2 Complementary information may be communicated through a Telegram channel: <https://t.me/+SIdex7-UK2kyOTVk>

Any failure, or delay, of posted information on the Telegram channel will not be grounds for requesting redress by a boat. This changes RRS 62.1(a).
- 3.3 A team leader's briefing will be held daily from 11 to 15 December, at time and place to be announced.

3.4 On the water RC may be transmitting on the following VHF channels:

Racing Area	VHF
Manguinhos	74
Feia	77
Branca	09

4 [DP] CODE OF CONDUCT

- 4.1 Competitors and support persons shall comply with any reasonable request from a regatta official.
- 4.2 Boats that are on a racing area or passing through a racing area to which they are not assigned shall remain clear of the area where boats are racing and any official vessel.

5 SIGNALS MADE ASHORE

- 5.1 Signals ashore will be displayed on the flagpole located:
 - (a) next to the launching ramp for One Person Dinghy, Two Person Dinghy, Skiff and Multihull events
 - (b) near to the exit of the Club at the Beach for the Windsurfing and Kiteboarding events
- 5.2 **[NP][SP]** Flag D displayed ashore means “The warning signal will be made not less than the minutes indicated in the table in SI 5.3 after flag D is displayed or the scheduled time whichever is later.” Boats shall not leave their berth until this signal is made.
- 5.3 When flag AP is displayed ashore, ‘1 minute’ in Race Signal AP is replaced with the minutes indicated in the table below (this changes Race Signal AP):

Racing Area	Warning Signal time
Manguinhos	30 min
Feia	50 min
Branca	40 min

- 5.4 Any reassignment of Events to Racing Areas will be posted:
 - (a) before 09:30 on the day it will take effect, or,
 - (b) when flag AP is displayed ashore, 30 minutes before flag AP for the event is removed, or,
 - (c) when flag AP is displayed afloat, the Racing Area may be changed. A Race Committee vessel will display flag L and move to the new Racing Area.
- 5.5 For Kiteboarding events: To indicate competitors may sail back shore to change the equipment, flag Kilo displayed afloat and ashore with two sounds means: “Races not started are postponed. The warning signal will be made not less than 30 minutes after Kilo flag was displayed. No sign in/sign out is required for this procedure.”
- 5.6 Depending on which discipline will be sailed (Course Racing or Slalom Racing) the Race Committee will display the Discipline flag ashore no later than Flag D, or afloat not later than warning signal.

Discipline	Flag
Course Racing	Red flag with iQFOiL circle
Slalom Racing	Grey flag with iQFOiL circle

6 SCHEDULE OF RACES

- 6.1 The Schedule of Races, including the time of the first warning signals, is shown in Sailing Instruction Addendum 1. The schedule for the practice race will be posted within 20:00 on the 9th December 2023.
- 6.2 The warning signal for each succeeding race will be made as soon as practicable.
- 6.3 To alert boats that a race or sequence of races will begin soon, the orange starting line flag will be displayed with one sound at least two minutes before a warning signal is made.

7 CLASS FLAGS

Event	Class Flag
Male and Mixed events	Class logo on white background
Female events	Class logo on light blue background

8 RACING AREAS

The racing areas are shown in Sailing Instruction Addendum 2.

9 COURSES

- 9.1 The diagrams in Sailing Instruction Addendum 3 show the courses, the course designations, the order in which marks are to be passed, and the side on which each mark is to be left.
- 9.2 Courses will not be shortened. This changes RRS 32.

10 MARKS

- 10.1 Marks will be as follows:

Racing Area	Course Marks	New Mark	Protector Mark
Manguinhos	Orange cylinder	Red cylinder	Red cylinder
Feia	Yellow cylinder	Orange cylinder	---
Branca	Red cylinder	Yellow cylinder	---

- 10.2 The starting marks will be Race Committee vessels or a Race Committee vessel and a white cylindrical inflatable mark.
- 10.3 The Windsurfing events slalom start pin will be a white cylinder.
- 10.4 The finishing marks will be a Race Committee vessel and a white cylindrical mark.
- 10.5 **Protector Mark P for the Kiteboarding events will be red. If Mark P is not set, it shall be disregarded.**
- 10.6 If a gate mark is missing and has not been substituted in accordance with RRS 34, the remaining mark shall be rounded to port.

11 THE START

- 11.1 The starting line will be between a staff displaying an orange flag on the Race Committee vessel and either a staff displaying an orange flag, or the course side of a starting mark at the other end.
- 11.2 **[DP]** A buoy may be attached to the Race Committee starting vessel anchor line just below keel depth. Boats shall not pass between this buoy and the Race Committee starting vessel at any time. This buoy is part of the Race Committee starting vessel ground tackle.
- 11.3 **[DP]** When a starting sequence or race is in progress, boats whose warning signal has not been made shall stay at least 50 meters to leeward of the starting line and its extensions. Boards in Windsurfing and Kiteboarding events shall stay at least 150 meters to leeward of the starting line and its extensions.
- 11.4 For all events except Windsurfing and Kiteboarding events, RRS 26 and Preparatory Signals Race Signals are deleted. Races will be started using the following signals. Times shall be taken from the display of visual signals. This changes RRS 26 and Race Signals.

Minutes before starting signal	Visual signal displayed	Visual signal removed	Sound signal	Meaning
6	Class flag P, or starting penalty if required RRS 42 if applicable (O/R flag)		No sound	Event to start and applicable rules
5	White flag with number 5		One	Warning signal
4	Blue flag with number 4	White flag	One	Preparatory signal
3	Pink flag with number 3	Blue flag	One	Three minutes
2	Red flag with number 2	Pink flag	One	Two minutes
1	Yellow flag with number 1	Red flag	One long	One minute
0	Green flag	Yellow flag	One	Start signal
+1		Green flag Class Flag P, U or Black flag O/R flag	No sound	

11.7 For the Windsurfing and Kiteboarding events, RRS 26 and Preparatory Signals in Race Signals are deleted. Races will be started using the following signals. Times shall be taken from the display of visual signals. This changes RRS 26 and Race Signals.

Minutes before starting signal	Visual signal displayed	Visual signal removed	Sound signal	Meaning
4	Class flag Starting penalty		No sound	Event to start and applicable rules
3	Pink flag with number 3		One	Warning signal
2	Red flag with number 2	Pink flag	One	Preparatory signal
1	Yellow flag with number 1	Red flag	One long	One minute
0	Green flag	Yellow flag	One	Start signal
+1		Green flag Class Flag Starting Penalty	No sound	

Heat number, if applicable, will be displayed before or with the warning signal without sound.

12 CHANGES OF THE NEXT LEG OF THE COURSE

12.1 To change the next leg of the course, the Race Committee will (a) lay a new mark, (b) move the finishing line or (c) move the leeward gate. When a new mark is laid, the original mark will be

removed as soon as possible. When in a subsequent change a new mark is replaced, it will be replaced by an original mark.

12.2 When Mark 1 has been replaced, Mark 1a will be removed and not re-laid. This changes RRS 33.

13 THE FINISH

The finishing line will be between a staff displaying a blue flag on the Race Committee vessel on one end and the course side of a finish mark on the opposite end, **or a staff displaying a blue flag on the nearby race committee vessel.**

14 TIME LIMITS AND TARGET TIMES

14.1 Time limits and target times in minutes are as follows:

Event	Start Window	Mark 1 Time Limit	Finish Window	Race Time Limit	Target Time
Skiff / Multihull	4	20	10	50	30
Two Person Dinghy	4	25	15	75	45
Kiteboarding	1	6	6	24	12
One Person Dinghy	4	25	15	75	50
Windsurfing Course Race	2	6	6	23	16
Windsurfing Slalom Heat	1	90 seconds	4	7	4-5

14.2 A boat starting later than the time stated in the Start Window after her starting signal will be scored Did Not Start without a hearing. This changes RRS A5.1 and A5.2.

14.3 If no boat passes Mark 1 before the Mark 1 Time Limit the race will be abandoned.

14.4 For iQFOiL only:

14.4.1 In Sprint Slalom the race shall be abandoned:

a) When the first 5 boards or a third of the fleet, whichever is smaller, did not pass mark 1 within the Mark 1 time limit;

b) When the first 5 boards or a third of the fleet, whichever is smaller, did not finish within the time limit.

14.4.2 In Course Racing the race shall be abandoned when the first 15 boats or a tenth of the group/fleet, whichever is smaller, did not finish within the time limit.

14.5 Boats failing to finish within the time stated in the Finish Window after the first boat sails the course and finishes will be scored Did Not Finish. This changes RRS 35, A5.1 and A5.2.

14.6 Failure to meet the Target Time will not be grounds for redress. This changes RRS 62.1(a).

15 HEARING REQUESTS

- 15.1 For each event, the protest time limit is 60 minutes after the last boat finishes the last race/ heat of the day or the Race Committee signals no more racing today, whichever is later. The time will be posted on the Official Notice Board. **Hearing requests shall be submitted through the online system available on the event website or they will be invalid, unless authorized by the jury to proceed differently before submitting it.** This changes RRS 61.2, 61.3, 62.2 and 66.
- 15.2 Notices will be posted on the Official Notice Board no later than 30 minutes after the protest time limit to inform competitors of hearings in which they are parties or named as witnesses. Hearings will be held in late Clube Armação de Búzios Clube at the main building, second floor and in the Búzios Vela Clube at the second floor of the building beside the entrance of the Clube, beginning at the time posted.
- 15.3 A list of boats that have been penalized for breaking RRS 42 under Appendix P or under SI 15.4 will be posted on the Official Notice Board.
- 15.4 For breaches of Notice of Race or Sailing Instructions marked [SP] or a class rule, the Race Committee or Technical Committee may apply a standard penalty without a hearing. However, the Race Committee or Technical Committee may protest a boat when they consider the standard penalty to be inappropriate. A boat that has been penalized with a standard penalty shall be neither protested by another boat for the same incident nor can another boat request redress for this committee action. This changes RRS 60.1(b), 63.1, 78.1 and A5.1.

16 SCORING

- 16.1 One race is required to be completed to constitute a regatta.
- 16.2 The Low Point System of RRS Appendix A will apply.
- 16.3 Except for Windsurfing and Kiteboarding events, when fewer than 3 opening series races have been completed, a boat's series score will be the total of her race scores. When 3 or more opening series races have been completed, a boat's series score will be the total of her race scores excluding her worst score.
- 16.4 Windsurfing and Kiteboarding events formats and scoring are shown in Sailing Instruction Addendum 5 and 6.
- 16.5 To request correction or review of a posted score, a boat shall submit a scoring enquiry available from the Official Notice Board or the Race Office.

17 [DP] [NP] SAFETY REGULATIONS

- 17.1 Boats not leaving shore for a scheduled race shall promptly notify the Race Office.
- 17.2 **[SP] Before leaving to race on each scheduled racing day, one representative of each crew shall personally sign out on the required Race Committee form, near the flagpole located as per SI 5.1. from two hours before the first schedule warning signal on that day.**
- 17.3 **[SP]** Within the protest time limit after returning ashore, one representative of each crew shall personally sign in on the required form, near the flagpole located as per SI 5.1.
- 17.4 A boat that retires from racing shall notify the Race Committee before leaving the racing area, or if that is not possible, shall notify the Race Office as soon as possible after returning ashore.
- 17.5 Boats that, for any reason, arrive ashore far from their assigned launching place and that cannot reach their boat park by their own means, shall promptly notify the Race Office, by telephone at the following number:
- +55 21 96925-5291**
- 17.6 **RRS 40.1 applies at all times while afloat, except briefly while changing or adjusting clothing or personal equipment.**

- 17.7 If race signal AP+H and N+H are displayed while afloat, all boats shall immediately return back ashore and wait for further signals.

18 [NP][DP] BOAT SHARING

- 18.1 When boats are shared between teams:
- the team sailing first on each day shall return ashore as soon as practicable after finishing the last race of the day.
 - the team sailing last on each day shall make a genuine effort to return ashore within the protest time limit.

19 [DP] REPLACEMENT OF EQUIPMENT

Substitution of damaged or lost equipment shall be authorized in writing by the Technical Committee. Requests for substitution shall be made via the Official Notice Board or the Race Office at the first reasonable opportunity, which may be after the race.

20 EQUIPMENT AND MEASUREMENT CHECKS

- 20.1 A boat or equipment may be inspected at any time for compliance with the Class Rules, Notice of Race and Sailing Instructions.
- 20.2 For the Kiteboarding events, equipment inspection will be made as described in Sailing Instruction Addendum 4.
- 20.3 **[DP]** When instructed by a race official on the water, a boat shall proceed to a designated area for inspection.
- 20.4 **[DP]** Supplied boats, board and equipment shall not be removed from the boat park, launching area or the adjacent waters without written permission of the Technical Committee.

21 OFFICIAL VESSELS

- 21.1 Official vessels will be marked as follows:

Function	Identification
Race Committee starting vessel	CBV Flag
Safety	White flag with SAFETY
PRO	White flag with PRO
Equipment inspection	Yellow flag with MEASURER
Media	Green flag with MEDIA
Jury	Blue flag with JURY

21.2 Actions by official vessels or helicopters/drones shall not be grounds for requesting redress by a boat. This changes RRS 60.1(b).

22 NOT IN USE

22.1 Not in use

23 [SP] IDENTIFICATION AND ADVERTISING

Each race day one representative of each crew shall collect their colored bibs for Event leaders (1st, 2nd, 3rd) at their Race Office before racing and return it there upon returning ashore, before the end of the protest time.

24 TRASH DISPOSAL

Trash may be placed aboard official vessels.

25 [DP] BERTHING

Boats shall be kept in their assigned places while ashore.

26 RISK STATEMENT

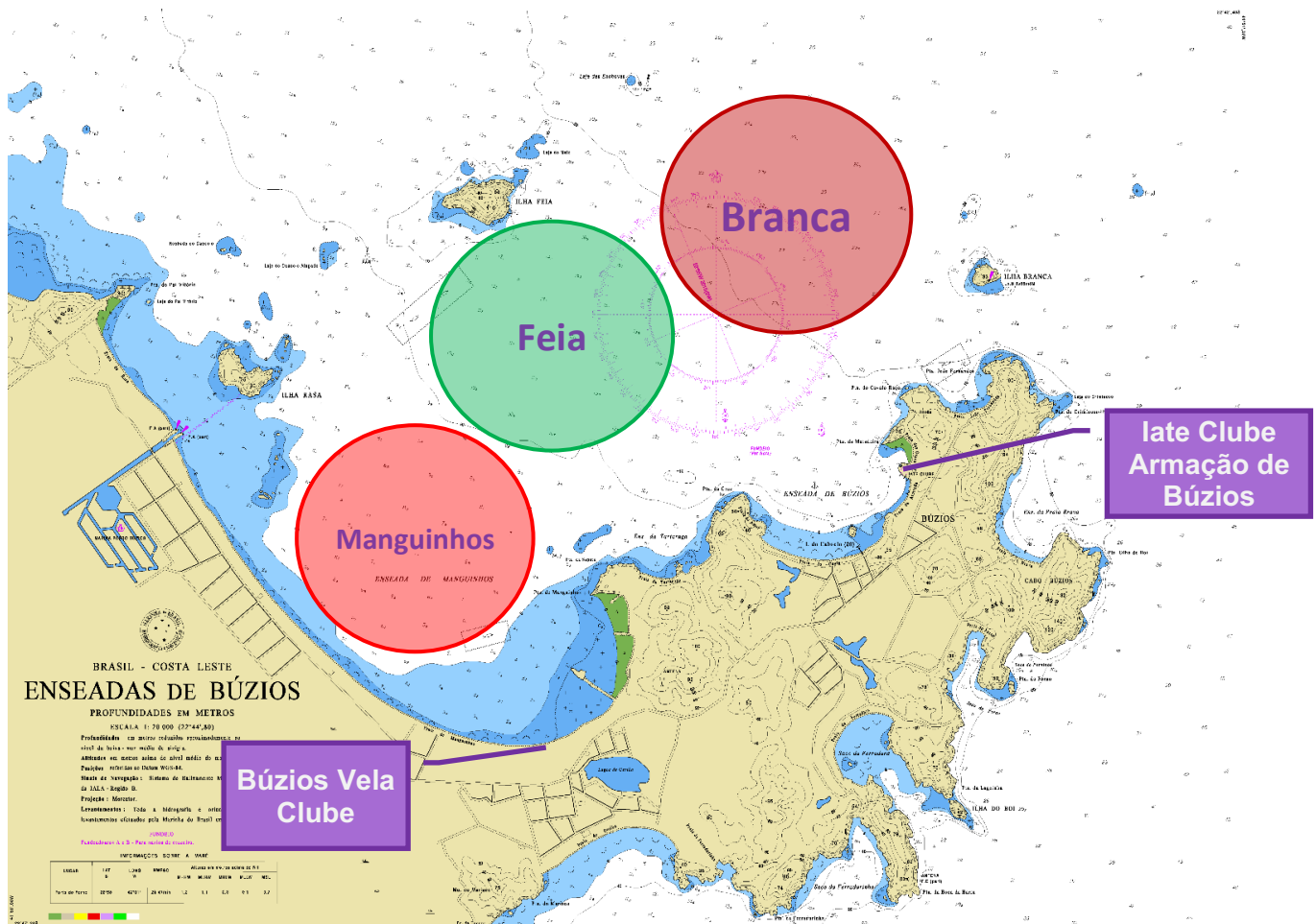
Sailing is by its nature an unpredictable sport and therefore inherently involves an element of risk. Competitors and support persons participate in the event entirely at their own risk. RRS 3 states: "The responsibility for a boat's decision to participate in a race or to continue racing is hers alone." By taking part in the event, each competitor agrees and acknowledges that:

- 26.1 They are aware of the inherent element of risk involved in the sport and accept responsibility for the exposure of themselves, their crew and their boat to such inherent risk whilst taking part in the event;
- 26.2 They are responsible for the safety of themselves, their crew, their boat and their other property whether afloat or ashore;
- 26.3 They accept responsibility for any injury, damage or loss to the extent caused by their own actions or omissions;
- 26.4 By participating in any race, they are satisfied that their boat is in good order, complies with the class rules, is equipped to sail in the event and they are fit to participate;
- 26.5 The provision of a race management team, patrol boats, umpires and other officials and volunteers by the organizer does not relieve them of their own responsibilities;
- 26.6 The provision of patrol boat cover is limited to such assistance, particularly in extreme weather conditions, as can be practically provided in the circumstances.
- 26.7 It is their responsibility to familiarize themselves with any risks specific to this venue or this event drawn to their attention in any rules and information produced for the venue or event and to attend any safety briefing held for the event.

ADDENDUM 1 – SCHEDULE OF RACES

Event	Area	10 DEC	11 DEC	12 DEC	13 DEC	14 DEC	15 DEC
Two Person Dinghy Male/ Mixed	Branca	1 Practice	2 Races 1100	2 Races 1330	2 Races 1100	2 Races 1330	1 Race 1100
Two Person Dinghy Female	Branca	1 Practice	2 Races 1330	2 Races 1100	2 Races 1330	2 Races 1100	1 Race 1230
One Person Dinghy Male	Branca	1 Practice	2 Races 1337	2 Races 1107	2 Races 1107	2 Races 1107	1 Race 1107
One Person Dinghy Female	Branca	1 Practice	2 Races 1344	2 Races 1114	2 Races 1114	2 Races 1114	1 Race 1114
Skiff Male/Mixed	Feia	1 Practice	3 Races 1100	3 Races 1500	3 Races 1100	2 Races 1400	2 Races 1100
Skiff Female	Feia	1 Practice	3 Races 1500	3 Races 1100	3 Races 1500	2 Races 1100	2 Races 1400
Multihull Mixed	Feia	1 Practice	3 Races 1300	3 Races 1300	3 Races 1300	2 Races 1230	2 Races 1230
Windsurfing Male	Manguinhos	1 Practice	4 Races 1300	4 Races 1335	4 Races 1100	3 Races 1305	3 Races 1100
Windsurfing Female	Manguinhos	1 Practice	4 Races 1305	4 Races 1330	4 Races 1105	3 Races 1300	3 Races 1105
Kiteboarding Male	Manguinhos	1 Practice	4 Races 1100	4 Races 1105	4 Races 1330	3 Races 1105	3 Races 1300
Kiteboarding Female	Manguinhos	1 Practice	4 Races 1105	4 Races 1100	4 Races 1335	3 Races 1100	3 Races 1305

ADDENDUM 2 – RACING AREAS



Waypoints Race Areas

Race Area MANGUINHOS – Windsurfing/Kiteboarding	Race Area FEIA – Skiff/Multihull	Race Area BRANCA – One Person Dinghy/Two Person Dinghy
22° 45.3255' S 41° 55.620' W	22° 43.950' S 41° 54.830' W	22° 43.235' S 41° 53.370' W

Distance to the respectively Venues:

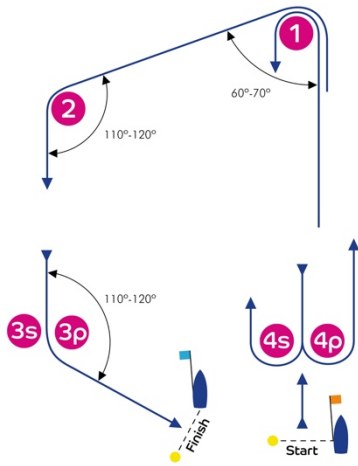
Race Area **MANGUINHOS**: 0,3 nm

Race Area **BRANCA**: 1,0 nm

Race Area **FEIA**: 1,9 nm

ADDENDUM 3 – COURSE DIAGRAMS

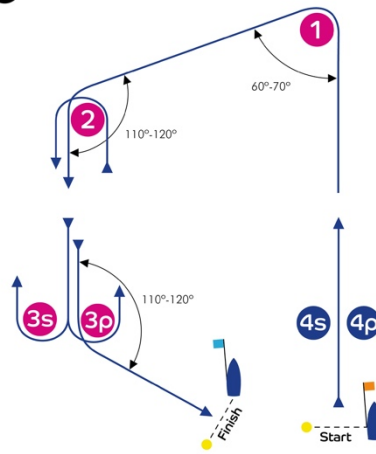
I



Course: Inner Trapezoid

Signal	Mark Rounding Order
I2	Start - 1 - 4s/4p - 1 - 2 - 3p - Finish
I3	Start - 1 - 4s/4p - 1 - 4s/4p - 1 - 2 - 3p - Finish
I4	Start - 1 - 4s/4p - 1 - 4s/4p - 1 - 4s/4p - 1 - 2 - 3p - Finish

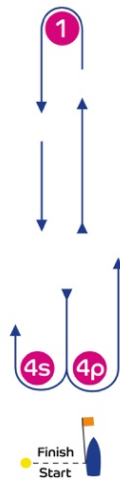
O



Course: Outer Trapezoid

Signal	Mark Rounding Order
O2	Start - 1 - 2 - 3s/3p - 2 - 3p - Finish
O3	Start - 1 - 2 - 3s/3p - 2 - 3s/3p - 2 - 3p - Finish
O4	Start - 1 - 2 - 3s/3p - 2 - 3s/3p - 2 - 3s/3p - 2 - 3p - Finish

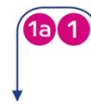
L



Course: Windward/Leeward

Signal	Mark Rounding Order
L2	Start - 1 - 4s/4p - 1 - Finish
L3	Start - 1 - 4s/4p - 1 - 4s/4p - 1 - Finish
L4	Start - 1 - 4s/4p - 1 - 4s/4p - 1 - 4s/4p - 1 - Finish

LA



Course: Same as Course L except with Offset Mark 1A

Signal	Mark Rounding Order
LA2	Start - 1 - 1a - 4s/4p - 1 - 1a - Finish
LA3	Start - 1 - 1a - 4s/4p - 1 - 1a - 4s/4p - 1 - 1a - Finish
LA4	Start - 1 - 1a - 4s/4p - 1 - 1a - 4s/4p - 1 - 1a - 4s/4p - 1 - 1a - Finish

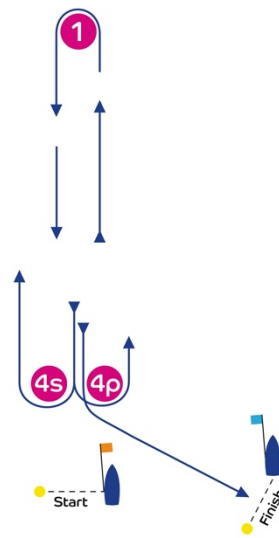
LG



Course: Windward/Leeward

Signal	Mark Rounding Order
LG2	Start - 1 - 4s/4p - 1 - 4s - Finish
LG3	Start - 1 - 4s/4p - 1 - 4s/4p - 1 - 4s - Finish
LG4	Start - 1 - 4s/4p - 1 - 4s/4p - 1 - 4s/4p - 1 - 4s - Finish

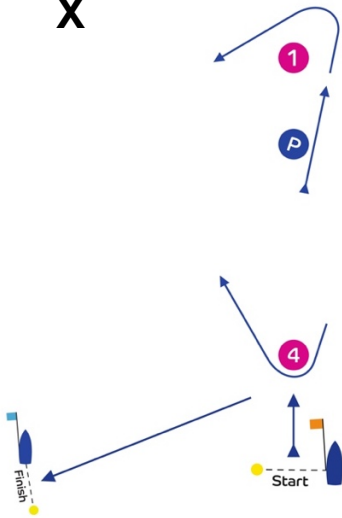
LR



Course: Windward/Leeward

Signal	Mark Rounding Order
LR2	Start - 1 - 4s/4p - 1 - 4p - Finish
LR3	Start - 1 - 4s/4p - 1 - 4s/4p - 1 - 4p - Finish
LR4	Start - 1 - 4s/4p - 1 - 4s/4p - 1 - 4s/4p - 1 - 4p - Finish

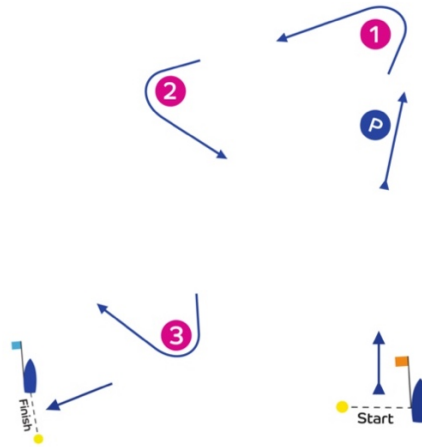
X



Course: W/L

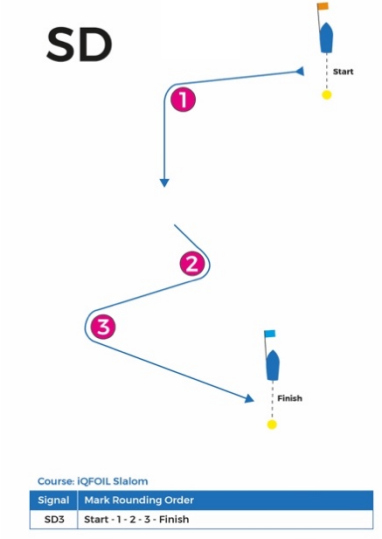
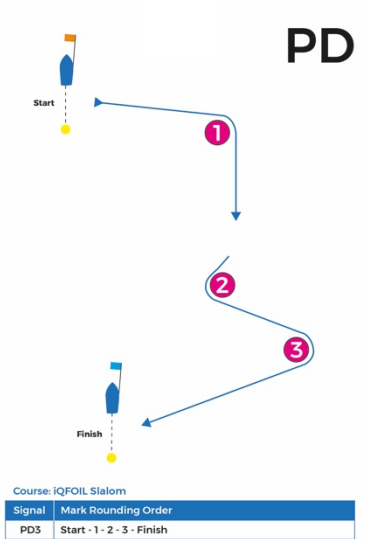
Signal	Mark Rounding Order
X2	Start - P - 1 - 4 - P - 1 - 4 - Finish

B



Course: Trapezoid

Signal	Mark Rounding Order
B2	Start - P - 1 - 2 - 3 - 2 - 3 - Finish



ADDENDUM 4 – KITEBOARDING EVENTS

EQUIPMENT INSPECTION

1. Kiteboards shall be available for inspection from 8 December 2023 at 1000.
2. The Technical Committee will post a schedule for kiteboards to be inspected and the items to present for inspection.
3. [DP] [NP] Competitors shall present the equipment to be inspected at the time and location posted.
4. [DP] [NP] After 1900 on 9 December 2023, no kiteboard or inspected equipment, other than personal equipment, shall be removed from the equipment storage, launching area or the adjacent waters without written permission of the technical committee.
5. [DP] [NP] Kiteboards are required to comply with RRS 78.1 from the time of the first scheduled warning signal until the end of the event.

ADDENDUM 5 – WINDSURFING EVENTS

FORMAT AND SCORING

FORMAT

- 1 The event consists of a Single Series (which may include one or both of following disciplines: Course Racing, Slalom Racing).
- 2 The intention of the Race Committee is to sail both disciplines throughout the event on the basis of wind conditions and forecast. The decision of which discipline is used is at the discretion of the Race Committee and will not be grounds for a request for redress. This changes RRS 60.1(b).
- 3 Men and Female shall start separately.
- 4 For Slalom Racing: When the fleet is split into heats, boards will be assigned to heats of, as nearly as possible, equal size and ability, following the principles outlined in item 5.
- 5 If competitors are split into heats:
 - 5.1 Boards will be assigned to heats (yellow and blue) of, as nearly as possible, equal size and ability. Initial assignments will be made by a seeding committee appointed by the Race Committee. Those assignments will be posted by 20:00 on the day before the first scheduled race for that event.
 - 5.2 Boards will be reassigned to heats after each day of racing, except if on the first day fewer than two races are completed by all heats. If all heats have completed the same number of races, boards will be reassigned on the basis of their ranks in the series. If all heats have not completed the same number of races, the series scores for reassignment will be calculated for those races, numbered in order of completion, completed by all heats. Reassignments will be made as follows:

Ranking in series heats:

Ranking	Heat
First	Yellow
Second	Blue
Third	Blue
Forth	Yellow
Fifth	Yellow
Sixth	Blue
Seventh	Blue
And so, on	And so, on

If two or more boards have the same rank, they will be entered in the left column in the order of heats in SI 5.1.

- 5.3 Assignments to heats will be based on the ranking available at 20:00 that day regardless of protests or requests for redress not yet decided.
- 5.4 If all heats have not completed the same number of races by the end of a day, the heats with fewer races will continue racing the following day until all heats have completed the same number of races. All boats will thereafter race in the new heats.

SCORING

- 6.1 A minimum of one race are required for a valid championship.
- 6.2 A race will be scored as follows:

6.2.1 A Course racing race will be scored as one race in a Series;

6.2.2 A Slalom Racing race, where each fleet has sailed one Heat, will be scored as one race in a Series. When an event is divided into fleets, boards will be scored in a Heat as follows:

Finishing Position	Score	Finishing Position	Score
1	1	14	27
2	3	15	29
3	5	16	31
4	7	17	33
5	9	18	35
6	11	19	37
7	13	20	39
8	15	21	41
9	17	22	43
10	19	23	45
11	21	24	47
12	23	25	49
13	25		

6.3 A competitor's series score will be the total of her race scores excluding her worst score(s) as follows:

Number of Races	Discards	Comments
1 – 2	0	No discard
3 – 7	1	One worst score excluded
8 – 15	2	Two worst scores excluded
16 or more	3	Three worst scores excluded

6.4 Not in use.

6.5 When racing in fleets, a board that did not start, did not sail the course, did not finish, retired or was disqualified will be scored points for the finishing place two more than the number of boards assigned to the largest heat in the Series. This changes RRS A5.2.

6.6 Ties shall be broken in accordance with RRS A8.

ADDENDUM 6 – KITEBOARDING EVENTS FORMAT AND SCORING

FORMAT

- 1 The event consists of a Single Series.

SCORING

- 2 A kiteboard's Series score will be the total of her race scores except that:
 - 2.1 when from 4 to 6 races have been completed her worst score will be excluded;
 - 2.2 when from 7 to 10 races have been completed her two worst scores will be excluded;
 - 2.3 when 11 or more races have been completed her three worst scores will be excluded;
- ~~3 A kiteboard that came to the starting area but did not start or did not finish will be scored points for the finishing place one more than the number of kiteboards that finished and were not disqualified or retired. This changes RRS A5. (DELETE)~~

ADDENDUM 7 – STANDARD PENALTIES

In accordance with the Notice of Race and Sailing Instructions, the Race Committee or Technical Committee will apply the following Standard Penalties. These scoring penalties shall apply to the race sailed nearest in time to the incident.

STANDARD PENALTIES APPLIED BY THE RACE COMMITTEE

NOTICE OF RACE / SAILING INSTRUCTIONS	
NoR 9 Identification and Advertising	One point scoring penalty to each race with noncompliance.
SI 5.2 Leave boat berth before signal	One point scoring penalty added to the first race of the day.
SI 17.2 Sign Out procedure before racing	One point scoring penalty added to the first race of the day.
SI 17.3 Sign In procedure after racing	One point scoring penalty added to the last race of the day.
SI 23 Collect and/or return colored bibs for event leaders	One point scoring penalty added to the first race of the day.

STANDARD PENALTIES APPLIED BY THE TECHNICAL COMMITTEE

CLASS RULES	
Nacra 15 Class Rule C.3.1 (ii): Not wearing a helmet	5 points
iQFoil Class Rule C.3.2 (i): Not wearing a helmet	5 points
iQFoil Class Rule C.3.2 (iii): Not wearing an impact vest	5 points
Nacra 15, 29er and iQFoil Class Rules: Not having an approved whistle	1 point
Nacra 15 Class Rule C.3.1 (iii): Not carrying a safety knife.	1 point
420 Class Rule C.5.2 (b) (1): Not having and tied the towing rope.	1 point
ILCA Class Rule 3(b) (xi): Not having tied the retention line	1 point

EQUIPMENT INSPECTION – FORMULA KITE

Equipment registration not completed in time	1 point on the first race of the series
Equipment registration not completed on registration day	5 points on the first race of the series
Arriving late to the equipment inspection	1 point on the first race of the series
Equipment inspection, no-show	5 points on the first race of the series
Event Limitation Mark missing – proof of originally applied event limitation mark by means of sticker, signature or serial number	1 point
Event Limitation Mark missing – no proof of originally applied event limitation mark, equipment complies with the applicable rules.	2 points